

---

# **COLORADO SCHOOL OF MINES THE BECK VENTURE CENTER**

---

GOLDEN, COLORADO | 07.28.21 | COMMUNITY MEETING

---

# AGENDA

- **PROJECT OVERVIEW**
- **SITE AND BUILDING DESIGN**
- **SCHEDULE**

# VENTURE CENTER GOALS

- PROVIDE A PLACE FOR MINES COMMUNITY TO RECEIVE MENTORSHIP AS THEY BUILD BUSINESS VENTURES AROUND THEIR IDEAS; A FEATURE THAT IS THE **FIRST UNIVERSITY BASED INCUBATOR** IN THE DENVER/METRO AREA
- ENGAGE MINES ALUMNI AND FACULTY IN A **COLLABORATIVE ENVIRONMENT OF INNOVATION**
- ENABLE MINES ALUMNI TO WORK AT AND **COLLABORATE WITH THE MINES COMMUNITY**
- PROVIDE A **RESOURCE-RICH ENVIRONMENT** WITH SUBJECT MATTER EXPERTS AVAILABLE TO BENEFIT STUDENTS
- **AMPLIFY MINES IMPACT** THROUGH ECONOMIC STIMULUS AND DEVELOPMENT
- BUILD A REGIONAL **ENTREPRENEURSHIP COMMUNITY** WITH MINES STUDENTS AT THE CENTER
- DEVELOP A SYNERGY WITH THE INNOVATION HUB, THROUGH A FACILITY THAT IS THE NEXT LOGICAL STEP AS IDEAS MATURE AND GRADUATE FROM THE HUB, AND **SHOWCASE INNOVATION AND COLLABORATION** WITHIN
- CREATE FLEXIBLE SPACE THAT IS DESIGNED TO PROMOTE ENCOUNTERS AND **SYNERGY BETWEEN OCCUPANTS**
- PROVIDE A VENUE FOR EVENTS SUCH AS LECTURES AND CONFERENCES THAT WILL **ENGAGE THE BROADER COMMUNITY**
- COMMUNICATE AND **PROMOTE THE MINES BRAND** THROUGHOUT THE FACILITY WITH A DESIGN THAT IS COMPATIBLE WITH CAMPUS ARCHITECTURE
- TO PROVIDE **OPPORTUNITY AND RESOURCES** TO GROUPS OR INDIVIDUALS WHO MAY NOT OTHERWISE HAVE THE CAPITAL TO INCUBATE THEIR IDEAS INTO BUSINESSES
- LEED GOLD
- LIMIT NEIGHBORHOOD IMPACTS
- PROVIDE **STORMWATER MANAGMENT THAT ANTICIPATES FUTURE DEVELOPMENT** CONSISTENT WITH THE CAMPUS MASTERPLAN
- **DELIVER A 32,000 GSF BUILDING**

# DESIGN GOALS

## PROGRESSIVE

A FACILITY THAT CONVEYS CUTTING EDGE TECHNOLOGY AND ENGINEERING

## ENGAGING

PROVIDES AN ENGAGING CONNECTION WITH THE COMMUNITY

## SHOWCASE

DISPLAYS A COLLABORATIVE, INNOVATIVE CAMPUS CULTURE



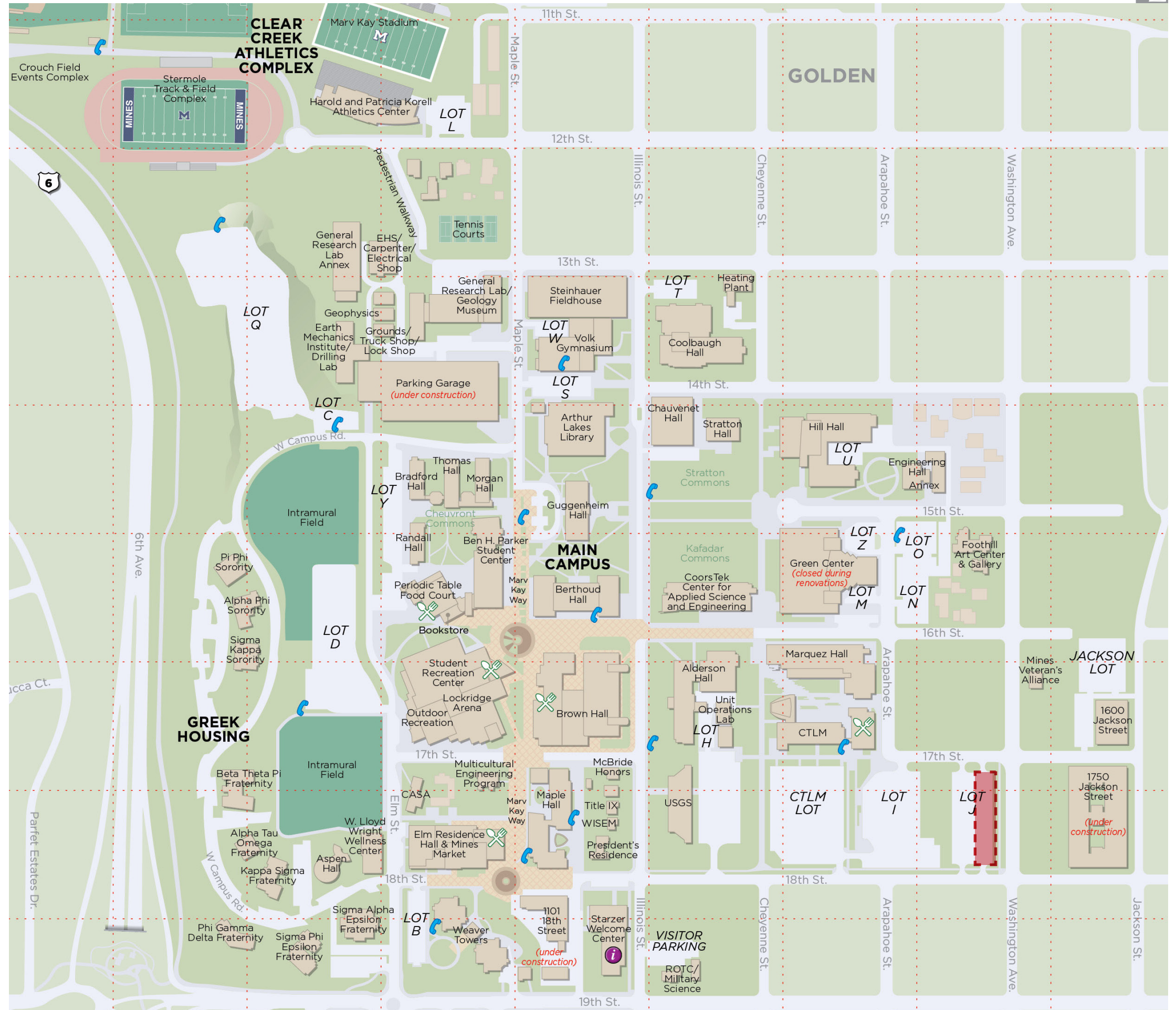


# PROJECT LOCATION

## COLORADO SCHOOL OF MINES MAIN CAMPUS MAP



 BECK VENTURE CENTER



# SITE PLAN

## BECK VENTURE CENTER SITE CONFIGURATION



**BUILDING SQUARE FOOTAGE**  
32,000 GSF, 3 STORIES

**CONSTRUCTION TIMELINE**  
END OF 2021 - SUMMER 2023



# BUILDING MASSING





# FLOORPLANS

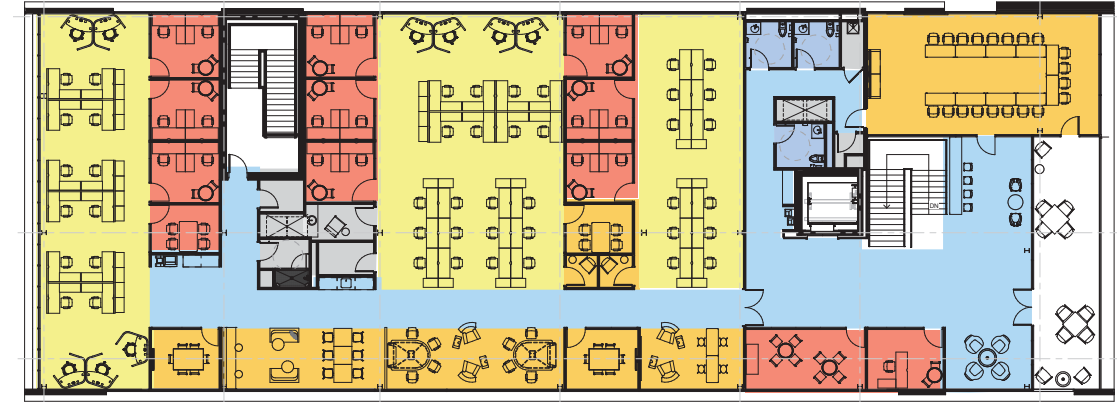
32,000 GSF

## PROGRAMMATIC FLOOR PLAN

SCALE: 1" = 32'-0"



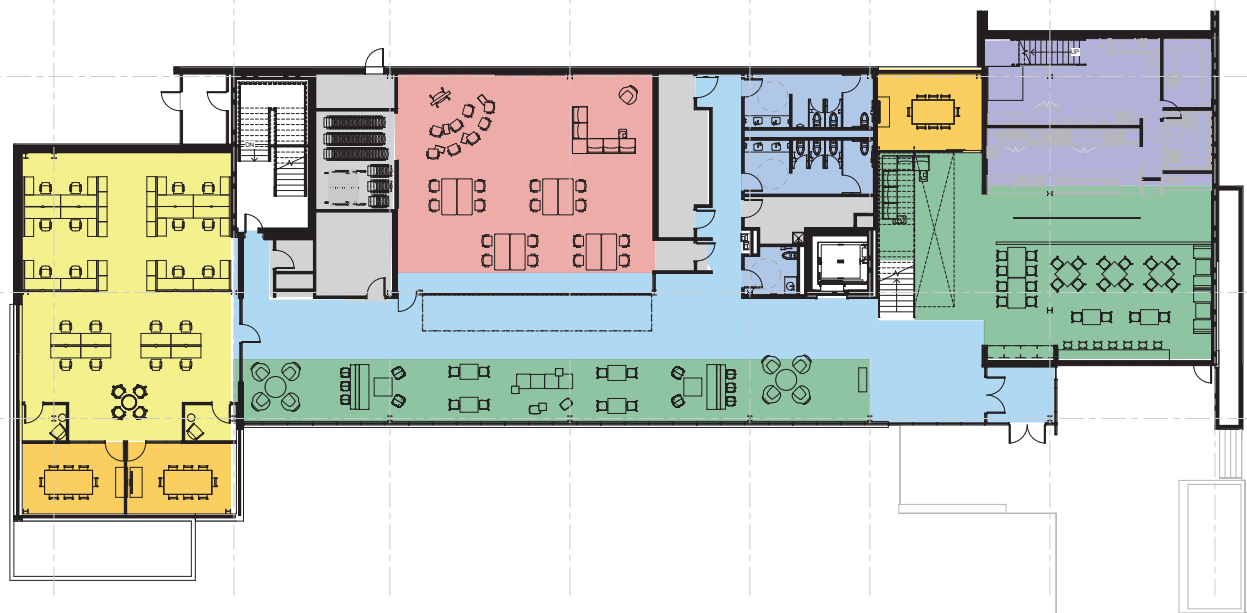
- OPEN WORKSPACE
- PRIVATE OFFICE
- MEETING / HUDDLE
- CAFE/LOUNGE
- COMMON SPACES
- CIRCULATION / WORKSPACE
- RESTROOMS
- KITCHEN
- SERVICE / STOR.



LEVEL 3  
10,180 SF



LEVEL 2  
9,524 SF



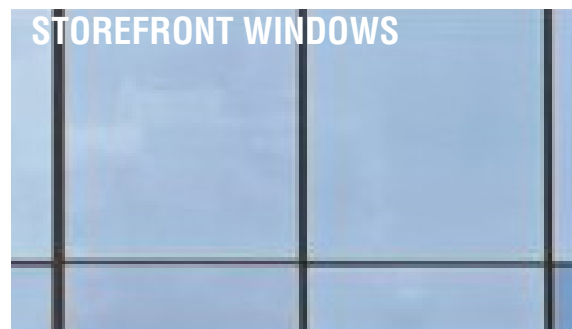
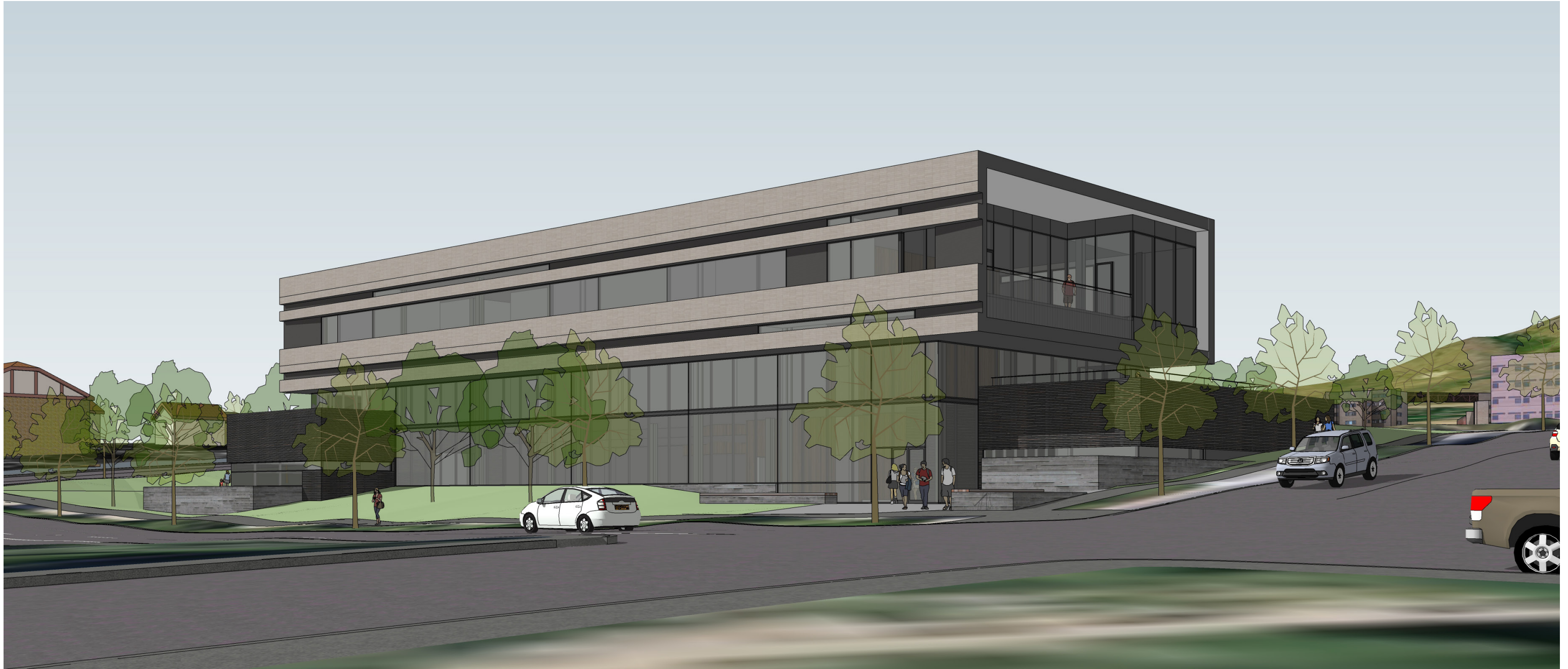
LEVEL 1  
11,035 SF



# EXTERIOR DESIGN

THREE STORY SCHEME

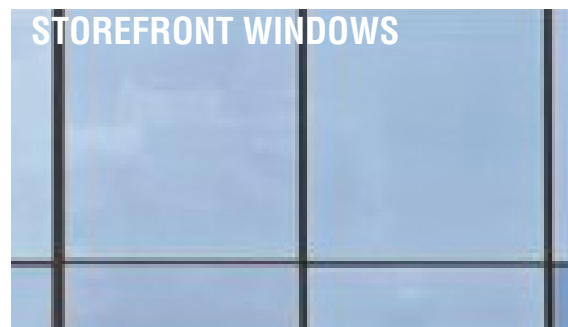
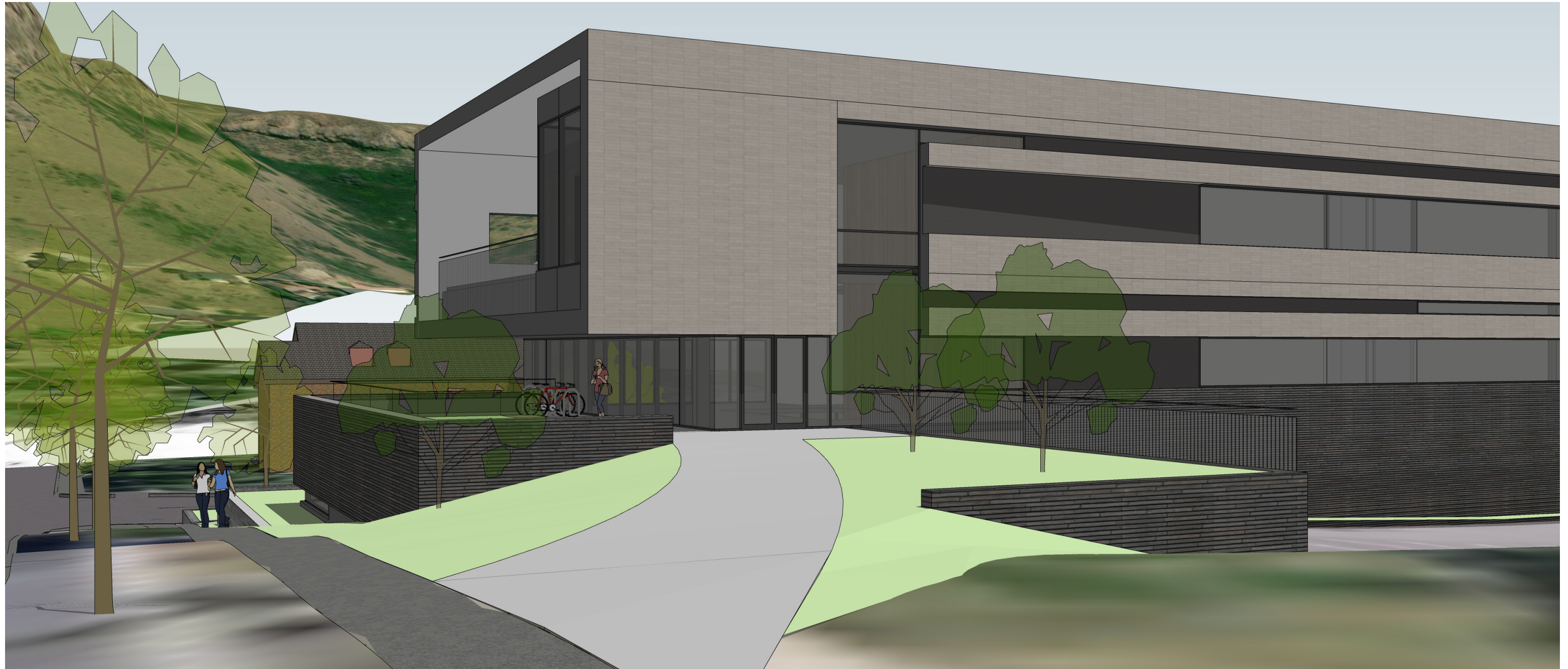
VIEW FROM NORTHEAST



# EXTERIOR DESIGN

THREE STORY SCHEME

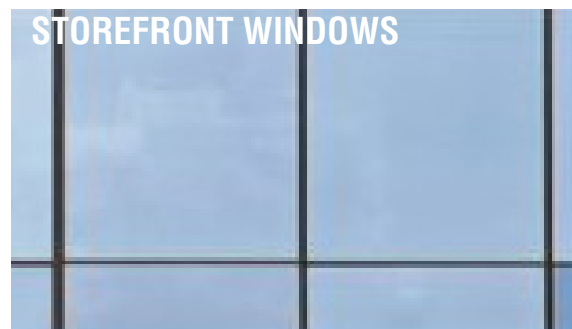
VIEW FROM NORTHWEST



# EXTERIOR DESIGN

THREE STORY SCHEME

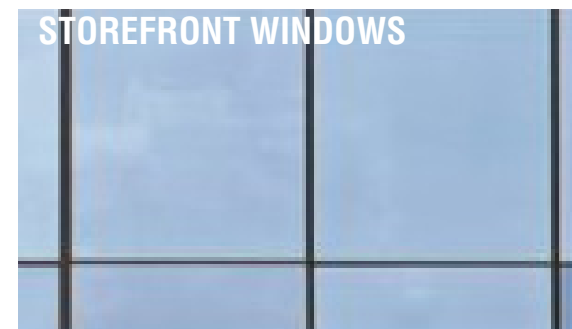
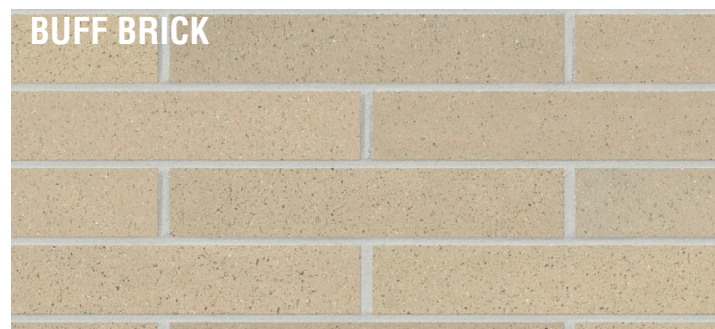
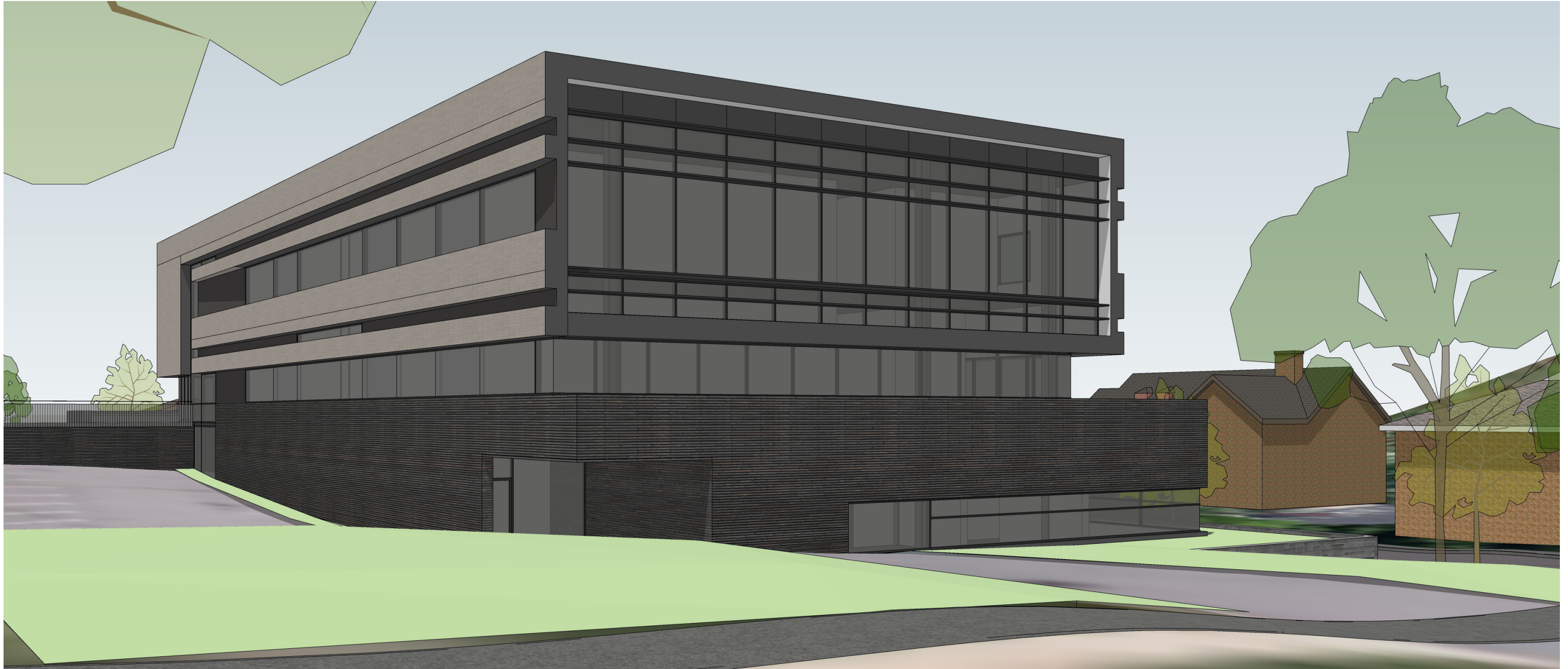
VIEW FROM SOUTHEAST



# EXTERIOR DESIGN

THREE STORY SCHEME

VIEW FROM SOUTHWEST



# SCHEDULE

DESIGN DEVELOPMENT ISSUED

EXCAVATION

CONSTRUCTION DOCUMENTS COMPLETE (BID)

CONSTRUCTION

**AUGUST 2021**

**AUGUST-SEPTEMBER 2021**

**NOVEMBER 2021**

**DECEMBER 2021 - SUMMER 2023**